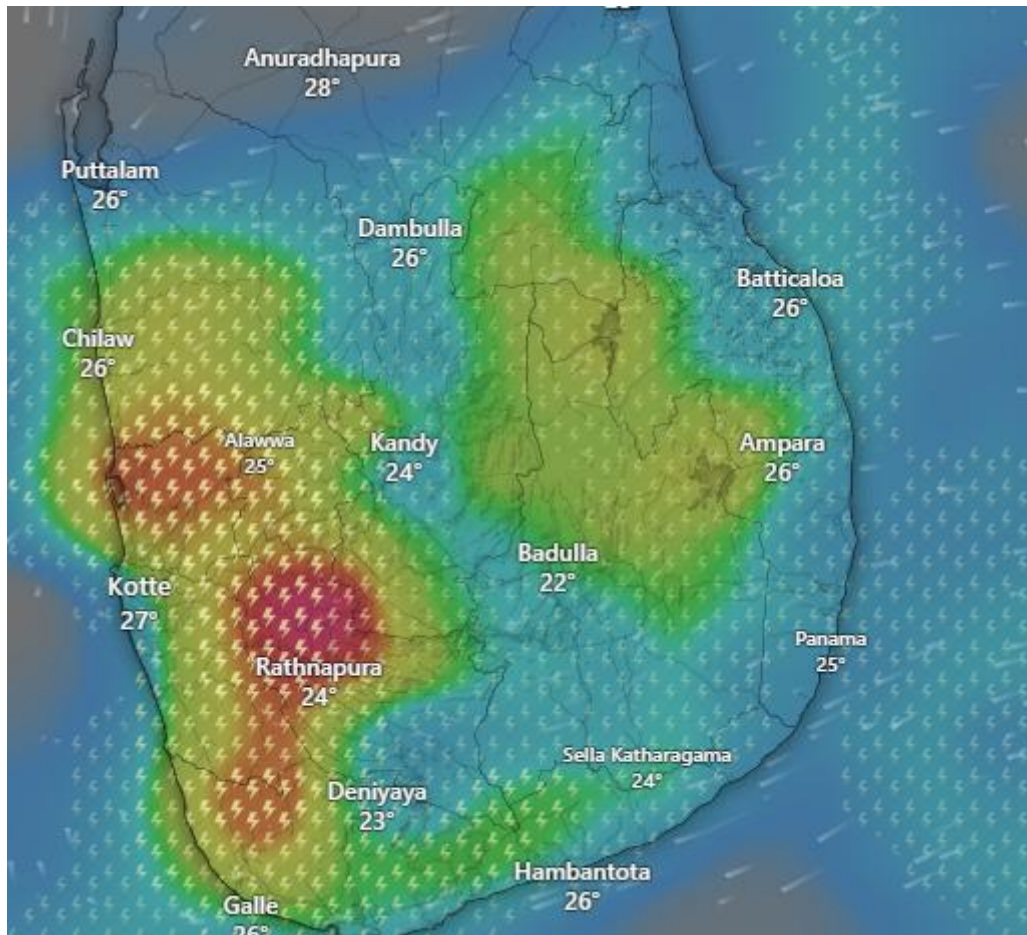




Extreme Rainfall In Srilanka



Affected Areas

Rathnapura Kotte

Galle Deniyaya

Alawwa and surrounding western zones

· Hazard Types

Extreme Rainfall/Flooding

Hazard Summary

Moderate to **heavy rainfall with thunderstorms** is currently affecting several parts of the island. **Intense rainfall and strong wind activity** are especially concentrated over the **western and southwestern regions**